

# Conexeu

---

Developing a Regenerative Tissue Therapy Platform  
Building a New Class of Regenerative Tissue Therapies

CONFIDENTIAL  
NOT FOR DISTRIBUTION

Not an offer to sell nor a solicitation  
of an offer to buy any securities.

March 2026

# Forward Looking Statement

## CAUTIONARY NOTE ON FORWARD LOOKING INFORMATION

CAUTIONARY NOTE ON FORWARD LOOKING INFORMATION This Presentation contains “forward-looking statements” and “forward-looking information” within the meaning of applicable securities laws (collectively, “forward-looking information”) with respect to CONEXEU. Statements in this Presentation that are forward-looking information are based on currently available competitive, financial, and economic data and operating plans as of the date of this Presentation but subject to various risks and uncertainties concerning the specific factors disclosed herein. Often, but not always, forward-looking information can be identified by the use of words such as “plans”, “expects”, “is expected”, “budget”, “scheduled”, “estimates”, “forecasts”, “intends”, “anticipates”, “will”, “projects”, or “believes” or variations (including negative variations) of such words and phrases, or statements that certain actions, events, results or conditions “may”, “could”, “would”, “might” or “will” be taken, occur or be achieved. Forward-looking information in this Presentation includes, without limitation, statements regarding regulatory submission timelines, including the FDA 510(k) submission and estimated market entry estimates, commercialization dates; the staged regulatory roadmap for expansion into dental, capital requirements, veterinary, 3D bioprinting, and aesthetic indications; total addressable market estimates across multiple verticals; manufacturing milestones, and clinical development plans; capital requirements and the ability to fund operations; and the potential bovine-to-human collagen transition for the aesthetics indication. Except for statements of historical fact, information contained herein constitutes forward-looking information, including, but not limited to: statements pertaining to the development and commercialization of the company’s products; the likelihood of obtaining regulatory clearance or approval; the leadership team; and the potential for the markets that CONEXEU is anticipating to access. Forward-looking information is not a guarantee of future performance and is based upon a number of estimates and assumptions of management at the date the statements are made, including among other things assumptions about: CONEXEU’s ability to raise sufficient capital to fund its regulatory submissions, manufacturing, and operations; the availability of suitable devices to support the 510(k) pathway; the commercial viability of the CXU™ platform across multiple indications; the continued availability of key leadership and scientific personnel; and the ability of CONEXEU to raise additional capital as CONEXEU continues to develop its operations. While CONEXEU considers these assumptions to be reasonable, the assumptions are inherently subject to significant business, social, economic, political, regulatory, competitive and other risks and uncertainties, contingencies and other factors that could cause actual performance, achievements, actions, events, results or conditions to be materially different from those projected in the forward-looking information. Many assumptions are based on factors and events that are not within the control of CONEXEU and there is no assurance they will prove to be correct.

Although CONEXEU has attempted to identify important factors that could cause actual results, performance or achievements to differ materially from those contained in the forward-looking information, there can be other factors that cause results, performance or achievements not to be as anticipated, estimated or intended. To the extent any forward-looking information contains forecasts or financial outlooks, such information is being provided solely to enable a reader to assess CONEXEU’s financial condition and its operational history and experience in the industry. Readers are cautioned that this information may be not appropriate for any other purpose, including investment decisions. Such information, as with forward-looking information generally, is, without limitation, based on the assumptions and subject to the risks and other cautionary statements set out above. The actual results achieved will vary from the forecast or financial outlook results and the variations may be material.

No representation or warranty of any kind is or can be made with respect to the accuracy or completeness of, and no representation or warranty should be inferred from, our projections or the assumptions underlying them. There can be no assurance that such information will prove to be accurate or that management’s expectations or estimates of future developments, circumstances or results will materialize. Readers should note that CXU™ is an investigational medical device that has not been cleared or approved by the FDA for commercial distribution in the United States; all performance statements are based on preclinical data and are not predictive of clinical outcomes; and competitive landscape analyses are based on internal review and have not been independently verified. As a result of these and other risks and uncertainties, the results or events predicted in this forward-looking information may differ materially from actual results or events. Because of the risks, uncertainties and assumptions contained herein, readers should not read forward-looking information as guarantees of future performance or results. Nothing in this presentation is, or should be relied upon as, a promise or representation as to the future. All forward-looking information provided in this Presentation are qualified in their entirety by this cautionary statement, and CONEXEU disclaims any obligation to revise or update any such forward-looking information or to publicly announce the result of any revisions to any of the forward-looking information contained herein to reflect future results, events or developments, except as required by law. Accordingly, readers should not place undue reliance on forward-looking information.

What if we could  
regenerate the tissue

lost to: Burns  
Aging  
GLP1  
Gum Disease

One Formula.  
One Device.

# CXU

## 5 Addressable Markets

Medical Aesthetics  
Injectables

**\$ 11.0B<sub>1</sub>**

Wound Care  
Burns/Skin Substitutes

**\$ 2.6B<sub>2</sub>**

Veterinary  
Wound Care

**\$ 1.4B<sub>3</sub>**

Dentistry  
Soft Tissue/Gums

**\$ 4.2B<sub>4</sub>**

3D Bio-Printing  
Inks & Tissue Scaffolds

**\$ 1.6B<sub>5</sub>**

1. Source: Grand View Research, "Aesthetic Injectable Market Size, Share & Trends Analysis Report By Product, By Application, By End-use, By Region, And Segment Forecasts, 2024–2030," Report ID: GVR-4-68040-275-9. Available at: <https://www.grandviewresearch.com/industry-analysis/aesthetic-injectable-market-report>
2. Source: Market.us, "Wound Care Devices Market Size, Share, Growth — CAGR of 4.8%," Updated January 5, 2026. Market valued at USD 2.6 billion (2023), projected USD 4.2 billion by 2033. Available at: <https://media.market.us/wound-care-devices-market-news>
3. Source: VPA Research (via MarketResearch.com), "Animal Wound Care Market Size, Share, and Outlook, H2-2025 — By Product, By Animal, By End-User," Report ID: 42060937. Available at: <https://www.marketresearch.com/VPA-Research-v4245/Animal-Wound-Care-Size-Share-42060937/>
4. Source: Consegic Business Intelligence, "Gum Grafting Market — Size, Share, Industry Trends, and Forecasts (2025–2032)," Report ID: CBI\_2168, Updated August 2025. Available at: <https://www.consegicbusinessintelligence.com/gum-grafting-market>
5. Source: Global Market Insights, "3D Bioprinting Market Size & Share Report, 2024–2032." Available at: <https://www.gminsights.com/industry-analysis/3d-bioprinting-market>

# CXU

A multi-component ECM designed to mirror  
key components of native ECM composition\*

Flowable as liquid.

Injectable through a needle.

Integrates with tissue.

Conforms on contact.

Stays where placed.

## Unique Thermosensitive ECM Formulation

At room  
temperature,  
CXU remains  
liquid



Capable of flowing through a 30G needle for precise  
placement

Approaching  
physiological  
temperatures  
(37°C), CXU  
undergoes rapid  
gelation



Gels in place within 10 minutes<sup>1</sup>, providing for contouring  
without subsequent migration

1. Pakyari M., Jalili R., Kilani R.T., et al., "Studying the in vivo application of a liquid dermal scaffold in promoting wound healing." *Experimental Dermatology* (2021) 31; 715-724. \*Preclinical data; not predictive of clinical outcomes

# Capital-Efficient Scale-Up & Distribution



## SHELF-STABLE, SCALABLE FORMAT

- Lyophilized powder (ambient storage/no cold chain)
- Point of care reconstitution (fits into practice flow)
- Possible lower logistics cost, global scalability without formulation change

## SIMPLIFIED MANUFACTURING & DISTRIBUTION

- CDMO Manufacturing
- Standard vial format, GMP-compatible
- Easy inventory + smaller shipping footprint
- Reduced storage burden
- Likely better economics across value chain; efficient model

## CXU Development

### 10 Years of Development



Developed over 10 years at the  
University of British Columbia.

### Validated Technology

- + \$13.5m+ equity raised from investors
- + Predicate-based regulatory pathway / 510(k) pathway
- + Multiple Advisors/KOLs in plastics & trauma surgery

### 11 Peer-Reviewed Publications



Acta Biomaterialia, Advances in Wound Care,  
Biomedical Materials, Canadian Journal of  
Diabetes, Experimental Dermatology, Gels,  
Journal of Burn Care, Tissue Engineering,  
Transplantation

### International Patents

40+ Countries



### Patent Assignment

100% assignment to the right,  
title, and interest in and to the  
patents worldwide.

## Introductions: Our Team



**Miles Harrison**  
President & CEO, Director

**30-year global healthcare leader** developing and building category-defining brands. Current board member of **Castle Biosciences** (CSTL), a precision diagnostics company.

**8-Figure Exit, Novaestiq Corp. Co-Founder & CEO**, built the 'next-generation' aesthetics platform, raised \$10M+ pre-Series A, and FDA approved in Sept '25.

Member of **Galderma's Executive Leadership Team** that crafted the **\$10.2B sale from Nestle to the EQT Group**.

**5 years as Galderma's North American President & GM**, scaling Aesthetics, Consumer, and Prescription businesses by **50%+ to \$2.1B+** across Dysport®, Sculptra®, Restylane®, Cetaphil®, Differin®, Proactiv® and Epiduo®.

Attained the **1st FDA-approved RX-to-OTC** acne switch in 30 years.

**SVP and VP for Novartis** across multiple verticals - Pharma, Oncology, Nutrition and Consumer.



**Dr. Brian K Pilcher** Ph.D.  
Chief Medical Officer

25+ years in dermatology and aesthetics, he served as **CMO of Suneva Medical** (acquired by Tiger Bio, 2024) and **VP of Medical Affairs** for **Merz North America**, leading the launch of **Radiesse**.

**8 FDA-related post-market** / label-expansion programs (Radiesse®, Xeomin®, Belotero®, Instalift®, HD-PRP, etc.)

**15 clinical programs** in regenerative aesthetics, fillers and thread-lifts.

**20+ Published Research Papers** (PMMA collagen filler science, wound biology).

**25 patents** (3 direct-inventor; 22 co-inventor) on aromatic-aldehyde dermatologic therapeutics & ECM biology.

**10 Affiliated Aesthetic / Pharma Companies** (Merz, Suneva, Endo, Sinclair, Servier, Roche, Cytrellis, Camurus, Paradigm, Premier HC).



**Dr. Claudia Chavez**, M.D., Ph.D.  
Chief Scientific Officer, Founder

M.D. Faculty of Medicine, Universidad Nacional Autónoma de México (UNAM), Mexico City.

**Ph.D. (Experimental Medicine)** Department of Surgery, Plastic and Re-constructive Surgery, UBC.

**6 translational tissue-engineering programs** (in-vivo bioreactor, liquid skin substitute, 3-D bladder/kidney tumor platforms).

**10+ pre-clinical / animal studies** advancing regenerative surgery toward clinic.

**40+ Published peer-reviewed clinical and research papers** (plastic surgery, wound healing, stem-cell therapy, 3-D bio-printing)

**1 U.S. patent** (+ licensed IP) for an implantable modular bio-reactor sold to the U.S. Army

**8 Industry & academic** collaborations in regenerative medicine.

## Introductions: Our Team



**David R. Bogart**  
Founder, Director

**25** Year entrepreneur and capital markets professional with experience **leading a Canadian biotech from startup to IPO, raising \$30M in 9** months.

**Founder of Conexeu Sciences;** led the **acquisition** of the Conexeu's **global core collagen/ECM IP** on an outright basis. (no licensing fees or royalty obligations)

Raised and advised on more than **\$8M in Conexeu seed capital**, coordinating early-stage financings and investor syndicates.

**Assemble** Conexeu's **world-class management and advisory team** across regenerative medicine, aesthetics, wound care, and capital markets.



**Steve Inouye**  
CFO

Financial executive with nearly **40 years in accounting and tax** management.

**Co-founded** a **Canadian biotech** developing bio-pharmaceutical products.

Deep expertise in **small-cap markets, securities regulations, and corporate governance.**

**Managed audits for multiple go-public transactions,** supporting capital raises and growth initiatives.



**Jeff Sharpe**  
Chairman

Chair of the Board with a track record of **scaling ventures from startup to IPO, including a biotech that raised \$30M in 9** months.

Guided numerous private companies to public listings, generating **~\$100M in financing with expertise in IPOs and M&A.**

Awarded **Canada's Top 40 Under 40** for leadership at a national start-up.

**Active investor** and advisor, focused on helping emerging companies transition from **private to public markets and achieve successful exits.**

## Introductions: Our Team



**Sonia Thomas, MBA**  
Head of Strategy & Transformation

**20+ years of experience** in operational excellence, brand development, M&A integration, finance, and commercial growth.

Experience includes roles across **Fortune 500** and **global healthcare organizations**.

Held multiple positions at **Galderma** spanning **Marketing, Finance, Project Management**, Launch Excellence, and Commercial Strategy.

Earlier career included leadership roles in audit, finance, integration, and operations across financial services and investment banking.

Recognized by Fort Worth CEO Magazine as a Top 20 Woman to Watch in Business.



**Jean-Romain (JR) Falconnet**  
Head of Business Development & Licensing

**25+ years in finance, transformation, and corporate development**, supporting CEOs, boards, and private equity sponsors.

Transaction experience spans across **M&A, licensing, carve-outs, restructurings, and exits**.

**Founder of Allyght Advisory**, serving private equity-backed and privately held companies including **structuring strategic partnerships** and advising executive teams on growth and transaction execution.

**Former Vice President of Corporate Development and Head of Transactions at Galderma**, with responsibility for acquisitions, divestitures, licensing agreements, and IPO readiness.

## Directors



**Dr. Paul Lorenc, MD, FACS**  
Director, Medical Advisor

**Dr. Lorenc** is board certified by the American Board of Plastic Surgery, a member of the American Society of Plastic Surgeons, International Society of Aesthetic Plastic Surgery.

Advised **J&J on Evolence collagen filler** acquisition (**\$159M**)

**10 FDA pivotal trials** (supporting regulatory clearances)

**25+ clinical studies** on dermal fillers, neurotoxins, lasers and surgical devices

**100+ Published Research Papers** (peer reviewed aesthetic manuscripts)

**39 patents** covering soft-tissue augmentation, surgical appliances, antimicrobial sutures, collagen formulation.

**20+ sponsor & industry affiliations**— Allergan, Galderma, Merz Aesthetics, Chroma, Teoxane, Krystal Bio



**Sebastian Purcell, PhD.**  
Director

**CEO and Chief Investment Officer of 1.2 Capital**, an alternative investment management firm.

**Research Grants** awarded from **American Philosophical Association, National Endowment for the Humanities**, and **National Endowment for the Arts**.

Lectured at **Princeton, Columbia and McGill University**

Work featured in multiple outlets including: **The Guardian, BBC World, and Time Magazine**



**Dr. Aaron Farberg, M.D.**  
Director

**Dr. Aaron Farberg** is a double board-certified dermatologist and fellowship-trained Mohs surgeon practicing in Texas. He is the **Chief Medical Officer** and **founder of Bare Dermatology**.

**14 FDA Phase 3/3b** registration-supporting dermatology trials.

**35+ clinical programs** across medical & procedural dermatology biologics.

**100+ peer-reviewed publications** spanning skin cancer diagnostics and device-based care.

**1 patent** — Device to Aid in Arterial Microvascular Anastomosis (US2016/50037).

**20+ sponsor & industry affiliations** (trial sponsors and advisory roles) — Sanofi, AbbVie, Janssen, Lilly/Dermira, UCB, Incyte, Regeneron, Apogee, Alumis, Takeda, Novartis, Merck, Roche, Clinuvel, Blueprint Medicines; plus advisory, Galderma, Sun Pharma, Castle Biosciences, SurgiVance.

## Medical Advisory



**Dr. Scott Rineer**  
MD MPH FACEP  
FAAEM CAPT. MC  
(FS/FMF) USN(Ret.)  
Advisor

Dr. Rineer is a Fellow of the **American Academy of Emergency Medicine** & a **Fellow of the American College of Emergency Physicians**. In addition, he is member of the **American Medical Association** and the **Florida Medical Association**.

**U.S. Marine Corps Surgeon Forces**  
Central including: Service in **Afghanistan**.

**U.S. Navy/USMC parachutist.**

An **expert in wounds and trauma injuries.**

WOUND CARE



**Dr. Peter Randelzhofer**  
MD, Dent. DGI, NvOI  
Advisor

**Specialist for Implantology** (DGI / NvOI),  
implant prosthetics & dental technology;

**Co-founder, Implant Competence  
Centrum** (ICC-M), Munich (2009)

Assistant Director, Centre for Implantology  
& Periodontology, Amstelveen, NL

DGI educator and leadership roles in  
Germany

**Global KOL**, Randelzhofer is invited  
worldwide to **lecture/teach on implant  
aesthetics**

DENTAL



**Dr. Vijay Gorantla**  
MD, PhD, FRCS  
Advisor

Dr. Gorantla is **tenured Professor of  
Surgery at Wake Forest University  
School of Medicine** and the **Wake Forest  
Institute for Regenerative Medicine**

His research interests include: **cellular  
therapies, nano medicine, organ  
transplantations, re-constructive  
surgeries, regenerative medicine**

Key member of the team that performed  
**first U.S. hand transplant team (1999,  
Sponsored by the Department of  
Defense)**

**Completed 8 transplants in 5 patients,**  
including the nation's first bilateral and full  
forearm transplants

REGENERATIVE



**Dr. Anthony Papp**  
MD, PhD, FRCSC,  
FABA  
Advisor

Dr. Anthony Papp is a royal College  
board-certified plastic surgeon, 25+ years'  
experience.

**President, Canadian Burn Association**

**Medical Director, BC Professional  
Firefighters' Burn Unit**

World-renowned expert in plastic surgery,  
burn care, wound healing & scar  
management

WOUND CARE

## Advisors



**April L. Burke**  
Advisor

**Finance executive** with experience across **public companies, private equity-backed businesses, and privately held organizations.**

Has led **capital allocation, cash management, M&A, divestitures, carve-outs, and IPO readiness.**

Most recently served as **EVP and Chief Financial Officer at Lucid Hearing**, overseeing finance for a **\$150M manufacturer and distributor.**

Responsibilities included **strategy, liquidity, reporting, tax, treasury, and stakeholder relationships.**

Experience includes ERP implementation, governance, controls, and finance function modernization.



**Ana Lucia Bastiani-Posner, MBA.**  
Advisor

**C-suite executive** and qualified financial expert with **30+ years of leadership** experience across **Fortune 500 companies** and research organizations.

Experience in **regulated healthcare environments and M&A**, including **modeling, synergy planning, integration, and scale-up.**

**Executive Vice President and CFO at Kyowa Kirin, Inc.**, a pharmaceutical company with approximately **\$1.2B in North American revenue.**

Has supported business integration and long-term growth, including **3X expansion over five years.**

Previously held senior finance roles at **New York Genome Center, Schering-Plough, Novartis, and Allergan.**

Climate-leadership certified, with a governance-oriented finance background.



**Andrew J. Costa, MBA**  
Advisor

**Investor and operator** with experience in **growth equity, investment banking, and national-scale program leadership.**

**Co-Managing Partner at RX3 Growth Partners**, a **\$250M** growth equity fund focused on health, wellness, and active lifestyle.

Leads sourcing, diligence, and investment committee processes, and has supported portfolio investments and transactions.

Previously served as **CIO at Roth Capital and Vice President in Morgan Stanley's eCommerce Investment Banking Group.**

Earlier served as a **Captain in the U.S. Air Force and as a SpaceX liaison**, leading large-scale programs and cross-functional teams supporting space launch modernization.

# Tissue Regeneration Trilogy

## THE SCIENCE

Tissue regeneration requires the coordinated presence of three essentials<sup>1</sup>:

### 01. Cells

The primary drivers  
which generate  
new tissue

### 02. Signals

The biochemical  
signals that regulate  
cell behavior

### 03. Scaffold

The extracellular matrix  
provides structural and  
biochemical support

Conexeu

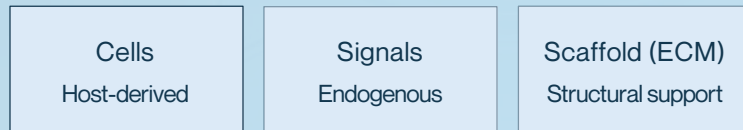
All three must be present and coordinated.  
Remove anyone, and the process shifts from regeneration to scar formation.

1. Badylak, Freytes & Gilbert, Acta Biomaterialia 2009;5(1):1-13, PMID 18938117, <https://pubmed.ncbi.nlm.nih.gov/18938117/>

## If tissue regeneration requires a multi-component scaffold, why does 95% of the market only deliver one or two components?

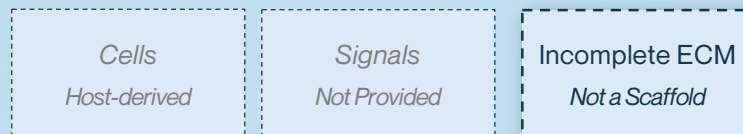
### THE SCIENCE

Tissue regeneration requires the coordinated presence of three essentials:



Collagen is a component of an ECM scaffold — not a complete scaffold. A complete ECM requires collagen + GAGs + associated structural proteins working in concert.

### WHAT 95% OF THE MARKET DELIVERS



### BUILT ON AN INCOMPLETE FOUNDATION

The wound care market has standardized around an incomplete scientific foundation. No incumbent offers a complete, ECM scaffold, creating structural white space above the commodity collagen tier.

### THE MARKET

**2/42** FDA-cleared wound care (KGN) devices deliver a single component or collagen + (Synthetic/ Biologic)



**\$2.6B** addressable wound care market built on commodity-tier science

ECM = extracellular matrix; GAG = glycosaminoglycan; KGN = FDA product code for wound care devices  
**Regulatory Status:** Caution: Investigational device. CXU™ is an investigational medical device. CXU-B (bovine) is pursuing 510(k) clearance. CXU-H (human-derived) is in pre-submission planning. Neither product has been cleared or approved by the FDA for commercial distribution in the United States. All product descriptions reflect design intent and are not claims of safety or effectiveness. **Scientific Claims:** All mechanism-of-action and performance statements marked (\*\*) are based on published peer-reviewed nonclinical data and are not predictive of clinical outcomes. **Competitive Data:** Competitive landscape analysis is based on Conexeu's internal review of publicly available FDA 510(k) summaries and the TPLC database. Classifications reflect Conexeu's analytical framework and have not been independently verified. \*Conexeu FDA KGN Device Review, 2026 (N=43 cleared devices)

## CXU™ Addressing the Structural Gap in Tissue Regeneration

### ABOUT CXU™

A Biomimetic ECM Scaffold

Multi-component scaffold containing collagen — not collagen alone

#### Injectable

Flows into complex wound geometry via 30G needle

#### Thermosensitive

Liquid-to-gel transition at body temp (~37°C) in ~10 min

#### Conforming

Fills voids, conforms into irregular geometries

Conexeu's CXU™ device candidate is intended to support host cell integration and tissue remodeling in a manner consistent with tissue regeneration processes.

### WHERE CXU™ SITS VS. THE MARKET

CXU™ a multi-component ECM scaffold

— WHITE SPACE —

95% — Incomplete ECM (commodity tier)

MECHANISM: CONFORM → INTEGRATE → REGENERATE

- 1 Conform Flows into wound geometry; gels in place<sup>1</sup>
- 2 Integrate Supports cellular infiltration and stable interface<sup>2</sup>
- 3 Remodel Supports remodeling toward native-like tissue<sup>3</sup>

10+ yrs R&D 40+ countries patent 11 publications

### BUILDING THE FOUNDATION TO ENTER A \$2.6B MARKET

CXU™ is targeting the white space above the commodity collagen tier — a biomimetic ECM scaffold with a decade of preclinical evidence<sup>1</sup>, patent protection across 40+ countries, and a platform designed to extend across multiple indications from one core formulation.

\*\*Scientific/HCP contexts only; preclinical evidence; not predictive of clinical outcomes | ECM = extracellular matrix; \*\*Scientific/HCP contexts only; preclinical evidence; not predictive of clinical outcomes | ECM = extracellular matrix;

1. Pourghadiri A., et al. "In situ forming scaffold improves the aesthetic outcome of meshed split-thickness skin grafts in a porcine model." *Advances in Wound Care* (2021) 10(3); 113–122. <https://doi.org/10.1089/wound.2019.1108>
2. Alnojeidi H., Kilani RT., Ghahary A. "Evaluating the biocompatibility of an injectable wound matrix in a murine model." *Gels* (2022) 8, 49. <https://doi.org/10.3390/gels8010049>
3. Pakyari M., Jalili R., Kilani RT., et al. "Studying the in vivo application of a liquid dermal scaffold in promoting wound healing." *Experimental Dermatology* (2021) 31; 715–724. <https://doi.org/10.1111/exd.14504>

# The Structural Gap in Tissue Regeneration

The wound care scaffold market is crowded.

KGN DEVICES\*

Most KGN-cleared devices are collagen-only formulations

Market Tier	Device Count	Composition	% of Devices	Strategic Outlook
Single-Component Tier	32	Collagen Only	74%	Many cleared devices, have similar compositional profiles.
Incremental	5	Collagen + Synthetic	12%	Improved handling and mechanical function, no biological advantage.
Transitional Tier	4	Collagen + Biologic	9%	Biological intent but stops short of completeness.
Multi-Component	2	Collagen + ECM proteins	5%	Multiple ECM proteins by design, limited by delivery format.
<b>CXU™ Platform</b>	—	<b>Multi- Component ECM</b>	<b>TARGET</b>	Multi-component, injectable, thermosensitive ECM scaffold. Designed for conformability, integration,.

**CXU™ is designed to mirror native human ECM, to provide a more supportive environment than collagen alone.**






- KGN = FDA product code for wound care devices
- Data: Competitive landscape analysis is based on Conexeu's internal review of publicly available FDA 510(k) summaries and the TPLC database. Classifications reflect Conexeu's analytical framework and have not been independently verified. \*Conexeu FDA KGN Device Review, 2026 (N=43 cleared devices)

Regulatory Status: CXU™ is an investigational medical device. CXU-B (bovine) is pursuing 510(k) clearance. CXU-H (human-derived) is in pre-submission planning. Neither product has been cleared or approved by the FDA for commercial distribution in the United States. All product descriptions reflect design intent and are not claims of safety or effectiveness. Scientific Claims: All mechanism-of-action and performance statements marked (\*\*) are based on published peer-reviewed nonclinical data and are not predictive of clinical outcomes. Competitive

## One Formula. One Device.

### Regulatory Road Map

A staged pathway designed to unlock multiple markets from a single asset.

Indication (KGN)	Asset	Strategy	Regulatory Pathway	Target Milestones	Market Entry Estimate <sup>†</sup>	Markets
<b>Phase 1 Wound</b>						
Wound Care	<b>CXU</b>	Predicate	FDA 510(k): Integra Flowable Excellegen	Q1 '27: 510(k) Submission	2027/2028*	
<b>Phase 2 Horizontal Expansion</b>						
Dental	<b>CXU</b>	<b>CXU Predicate</b>	FDA 510(k): CXU	Clinical Pilot* (2027)	2028*	
3D Bioink Medical Grade*	<b>CXU</b>	<b>CXU Predicate</b>	FDA 510(k): CXU	Preclinical	TBD	
Veterinary	<b>CXU</b>	Not Required	Not Regulated	Manufacturing Scale Up	2027/2028*	
<b>Phase 3 High Margin Aesthetics</b>						
Aesthetics	<b>CXU-Human</b>	<b>CXU Predicate</b>	PMA: <b>CXU</b>	Preclinical R&D (2026)	> 2030*	

#### 510(k) Predicate Strategy Advantage

- Existing bovine collagen predicates may reduce initial regulatory spend.
- Predicate strategy designed to compress timelines versus de novo or PMA alternatives.

#### Predicate-Based Foundation

- A cleared CXU device would be intended to establish a safety profile and substantial equivalence. Collagen-agnostic formulation designed to support bioequivalence of human-derived version. Liquid-to-gel transition validated in cleared predicate; same mechanism across variants.

#### The "One Formula" Advantage

- The Company believes CXU-B to CXU-H transition requires no material reformulation or new IP filings, subject to FDA determination.†
- The Company intends a Pre-Submission meeting with FDA (targeted Q1 2027) to seek input on PMA aesthetics requirements.‡

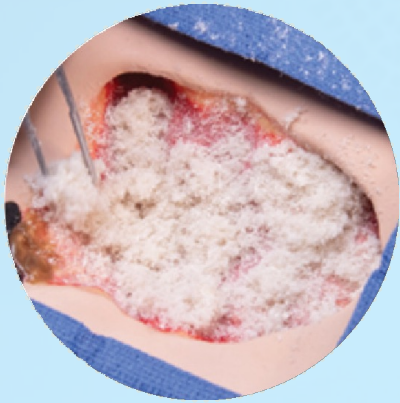
NOTE: CXU is bovine collagen source/ CXU-H is human collagen source

† See Forward-looking statement. See "Cautionary Note on Forward-Looking Information," Page 2.

<2030 reflects current planning estimates; actual timelines may differ

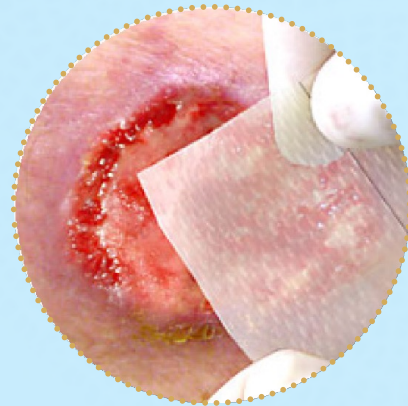
# Initial Application - Wound Care

Incomplete coverage + poor integration = variable healing/repair and delayed closure



**Powdered Collagen Fillers**

- + Incomplete Filling of Wound Bed
- + Delayed Integration



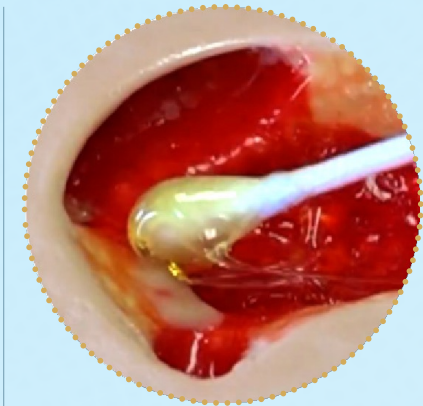
**Collagen Grafts**

- + Difficult in Complex Wound Shapes
- + Delayed Integration with Host Tissue



**Collagen Flowables**

- + Thick Gel Consistency
- + Slow Integration



**Collagen Gels**

- + Uneven Application
- + Challenging Application in Precise Areas

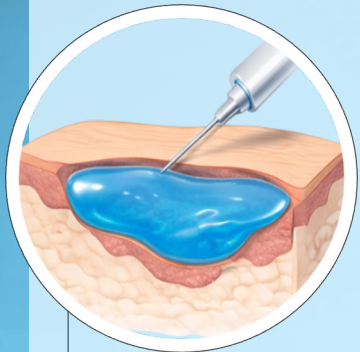
Lack of uniformity seen in existing treatment options can hinder the healing process<sup>1</sup>

1. \* Alnojeidi H, Kilani RT., Ghahary A, "Evaluating the biocompatibility of an injectable wound matrix in a murine model." Gels (2022) 8, 49;  
\* Pakyari M., Jalili R., Kilani R.T., et al., "Studying the in vivo application of a liquid dermal scaffold in promoting wound healing." Experimental Dermatology (2021) 31; 715-724;  
\* Hartwell R., Poursmasjedi-Meibod MS., Chavez-Munoz C., et al., "An in-situ forming skin substitute improves healing outcome in a hypertrophic scar model." Tissue Engineering Part A (2015) 21(5); 1085-1094.

# CXU™ Optimized for Tissue Integration

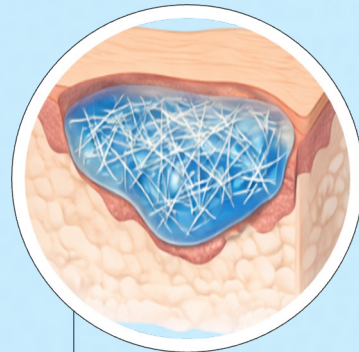
## Market Need: A Conforming Scaffold That Fills Voids and Integrates in the Wound

A complete, integrated coverage in wound geometry<sup>1</sup>



### FLOWABLE<sup>2</sup>

- Contours to various wound margins and depths, creating a stable interface
- Flows into tissue margins for crucial integration and tissue interface formation
- Ease of injection and precise placement



### GELS IN PLACE<sup>2</sup>

- Temperature sensitive, rapid Gelation In Situ, gels ~10 min
- Provides elasticity and mechanical integrity
- Reduces variability in outcomes, removing “fit” as a failure point



### DESIGNED FOR BETTER INTEGRATION

- Cohesivity and tissue integration are crucial for tissue regeneration
- May result in fewer failures/re-applications
- Based on preclinical observations; clinical significance not yet established, may provide a faster path to closure, lower fibrosis and better aesthetic outcomes<sup>3</sup>
- Potential for lower complication risk tied to dead space and non-integrated interfaces

1. Pakyari M, Jalili R, Kilani R.T., et al., "Studying the in vivo application of a liquid dermal scaffold in promoting wound healing." *Experimental Dermatology* (2021) 31; 715–724.  
 2. Hartwell R., Leung V., Chavez-Munoz C., et al., "A novel hydrogel-collagen composite improves functionality of an injectable extracellular matrix." *Acta Biomaterialia* (2011) 7; 3060–3069.  
 3. Pakyari M, Jalili R, Kilani R.T., et al., "Studying the in vivo application of a liquid dermal scaffold in promoting wound healing." *Experimental Dermatology* (2021) 31; 715–724.

**Conexeu** |

A new collagen-based injectable  
for tissue regeneration.

What if we could  
regenerate the tissue  
lost to aging instead  
of just filling space? \*\*

\*\*Preclinical concept; not predictive of clinical outcomes. CXU™ is an investigational device.

# Market Problem: Restoring the Extracellular Matrix

## Natural Aging:

The extra cellular matrix (ECM), degrades, affecting overall skin quality and function<sup>1</sup>



## GLP-1 Deflation:

Rapid, significant weight loss can deplete facial fat pads, causing hollowing and skin laxity that can read as accelerated facial aging<sup>2</sup>

1. Source: <https://www.dovepress.com/role-of-adipose-tissue-in-facial-aging-peer-reviewed-fulltext-article-CIA>  
2. <https://academic.oup.com/asjopenforum/article/doi/10.1093/asjof/ojaf056/8160112?>

# GLP-1 Impact: Exposing the Limits of Aesthetics Tools

1 in 8

Proportion of US adults taking prescription weight loss medications<sup>1</sup>

19.2%

CAGR of global market 2023-2029<sup>2</sup>

\$200B

Global GLP-1 prescriptions forecasted by 2030<sup>3</sup>

62%

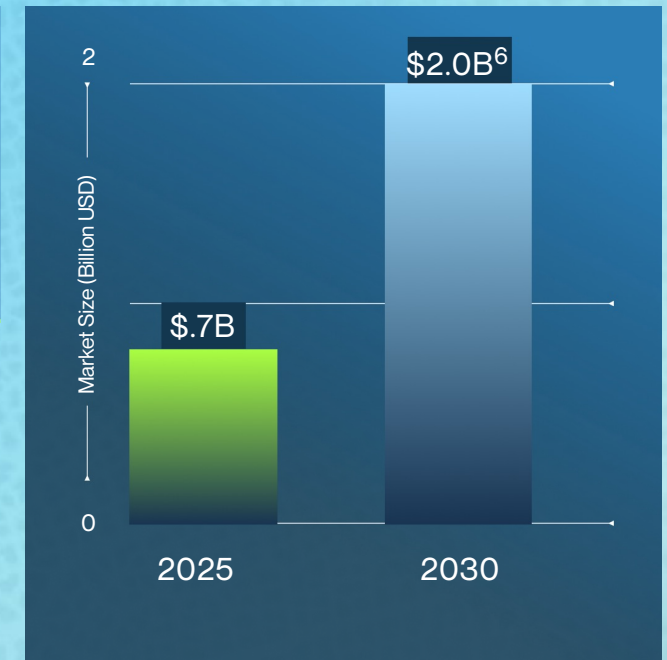
Patients concerned with loose skin<sup>4</sup>

63%

GLP-1 patients seeking facial aesthetic procedures are new or inactive users<sup>5</sup>

\$1.3B

New provider revenue from treating GLP-1 concerns<sup>6</sup>



1. Source: Reuters May 2024: Roughly 1 in 8 US adults have taken GLP-1 drugs like Wegovy, poll shows: <https://www.reuters.com/world/us/roughly-1-8-us-adults-have-taken-glp-1-drugs-like-wegovy-poll-shows-2024-05-10/>  
2. Source: Grandview Research 2024: North America Glp-1 Agonists Weight Loss Drugs Market Size & Outlook: <https://www.grandviewresearch.com/horizon/outlook/glp-1-agonists-weight-loss-drugs-market/north-america>  
3. Source: JP Morgan Feb. 2026: How demand for (and supply of) weight loss drugs is playing out in 2026: <https://www.jpmorgan.com/insights/global-research/current-events/obesity-drugs>  
4. Source: New Beauty Aug. 2024: New Report Tracks GLP-1's Impact on Plastic Surgery and Beauty Spending During Election Year: <https://www.newbeauty.com/plastic-surgery-trends-2024/>  
5. Source: McKinsey May 2025: GLP-1s are boosting demand for medical aesthetics: <https://www.mckinsey.com/industries/life-sciences/our-insights/glp-1s-are-boosting-demand-for-medical-aesthetics>  
6. Source: BCG Aug. 2025: <https://media-publications.bcg.com/Five-Growth-Imperatives-for-Medical-Aesthetics-in-Times-of-Uncertainty.pdf?linkId=850965256>

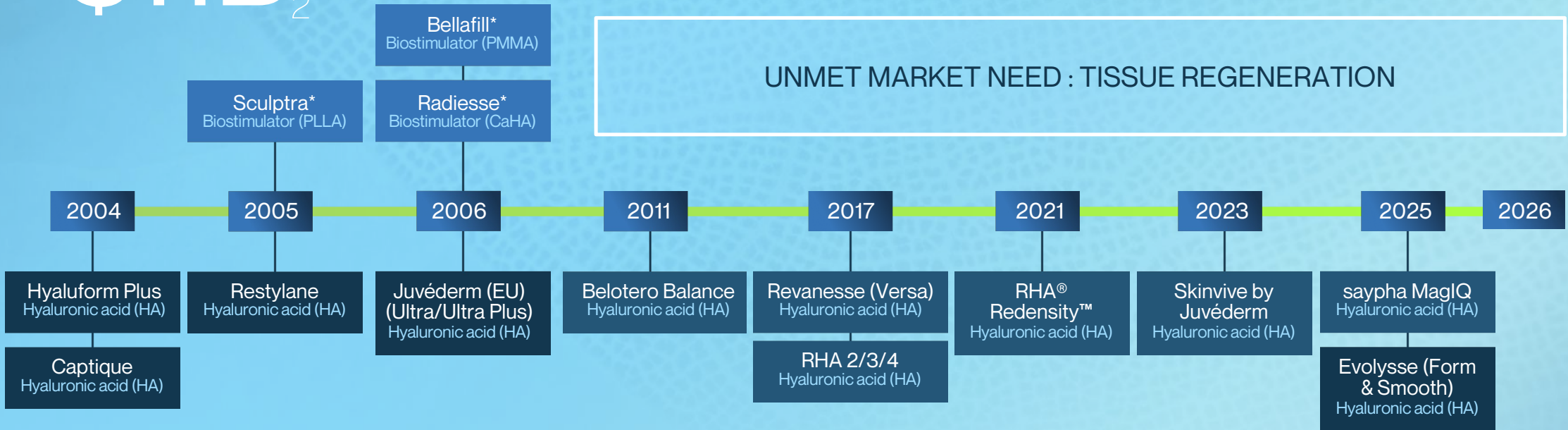
# Market Challenge: HA Fillers | 90% market share | 22 years<sup>1</sup>

## Aesthetics Market

**\$11B<sup>2</sup>**

Aesthetic injectables have not solved the body contouring need, and can't fully address the new GLP-1 need for tissue loss.

UNMET MARKET NEED : TISSUE REGENERATION

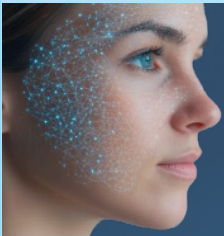


1. Source: Roots Analysis, "Dermal Fillers Market Size, Growth, Trends, Opportunities, 2035, 2025: <https://www.rootsanalysis.com/reports/dermal-fillers-market.html>  
 2. Source: Grand View Research, "Aesthetic Injectable Market Size, Share & Trends Analysis Report By Product, By Application, By End-use, By Region, And Segment Forecasts, 2024-2030," Report ID: GVR-4-68040-275-9. Available at: <https://www.grandviewresearch.com/industry-analysis/aesthetic-injectable-market-report>

# A New Paradigm for Injectables: Volume + Regeneration\*\*

## Designing the Ideal Injectable:

- Supports native tissue in-growth by mirroring human ECM (Preclinical)<sup>1</sup>
- Minimal inflammatory response (Preclinical)<sup>1</sup>
- Flows through a 30G needle for fine lines and precise placement<sup>3</sup>
- Exhibits volume lifting capacity of market leaders (Preclinical)<sup>3</sup>
- Delivers immediate volumization with long lasting correction (Preclinical)<sup>3</sup>



Potential for small facial volume indications and larger body contouring applications

\*\*Preclinical concept; not predictive of clinical outcomes. CXU™ is an investigational device.

1. Hartwell R, Leung V, Chavez-Munoz C, et al., "A novel hydrogel-collagen composite improves functionality of an injectable extracellular matrix." *Acta Biomaterialia* (2011) 7; 3060–3069
2. Pakyari M, Jallili R, Kilani R.T., et al., "Studying the in vivo application of a liquid dermal scaffold in promoting wound healing." *Experimental Dermatology* (2021)
3. Data on File. Conexeu. 2026. Preclinical findings; not peer-reviewed. Clinical significance not yet established.

Conexeu

A new collagen-based injectable  
for tissue regeneration.

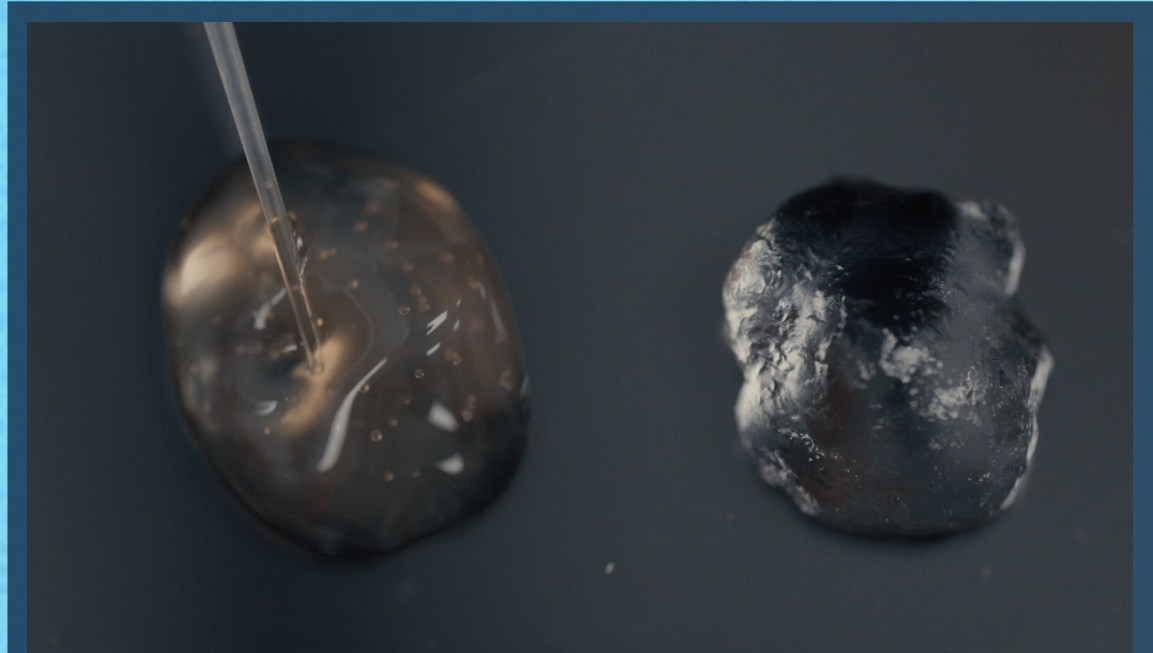
# CXU

Aesthetic Injectables

New Application:

No Reformulation

Required



CXU-H

Market-Leading HA

CXU™ demonstrates it can meet or exceed key functions  
against market leading injectables, without reformulation<sup>1</sup>

1. Data on File. Conexeu. 2026. Preclinical findings; not peer-reviewed. Clinical significance not yet established.

## High Potential Utility for CXU™

Designing a new approach for injectable approach for tissue support in  
aesthetics to support to support tissue remodeling processes\*\*

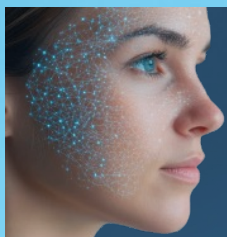
# CXU

Patented Biomimetic ECM IP  
Science Driven • Patent Protected • Pre-Clinical

### Aesthetic Product Potential

A Regenerative injectable with the potential to  
become a category leader in medical aesthetics

Natural tissue in-growth supported by CXU™,  
a thermosensitive ECM formula<sup>1</sup>



Potential  
Applications:

Facial Dermal  
Injectables

Large Body Contouring  
(Breast Lifts & Buttocks)

\*\* Based on preclinical data. Not predictive of clinical outcomes

1. Data on File. Conexeu. 2026. Preclinical findings; not peer-reviewed. Clinical significance not yet established.

Conexeu

A new collagen-based injectable  
for tissue regeneration.

# Vision

Re-define the “regenerative space”  
with credible biology to find better  
consumer outcomes



\*\*Preclinical concept; not predictive of clinical outcomes. CXU™ is an investigational device.

## Company Highlights



### Disruptive Formulation & "Liquid-to-Gel" Technology

- CXU™ device candidate provides a stable scaffold that supports cellular infiltration, vascularization, and native tissue remodeling<sup>1</sup>
- Designed to mirror native human ECM, to provide a more supportive environment than collagen alone.
- A thermosensitive low-viscosity flowable liquid at room temperature, allowing for precise placement.
- Gels when reaching body temperature, conforming to irregular geometries for improved integration



### Massive Multi-Vertical Addressable Markets<sup>2</sup>

- **~\$20B Combined Global TAM:** One core technology targeting five high-margin sectors
  - **Medical Aesthetics (\$11B):** Volumization with tissue remodeling support in facial and body contouring<sup>3</sup>
  - **Dental (\$4.2B):** Targeting soft tissue and gum regeneration, forecast to reach \$11.3B by 2035
  - **Wound Care (\$2.6B):** Advanced skin substitutes for burns and complex chronic wounds
  - **Veterinary (\$1.4B) and 3D Bio-Printing (\$1.6B):** Scalable tissue inks for personalized grafts



### Regulatory & Commercial Efficiency

- **510(k) Predicate-Based Regulatory Pathway:** Utilizing the Predicate Device Strategy to potentially de-risk the path to market
  - Cost Advantage: Expected regulatory spend for a 510(k) submission vs. for a De Novo device
  - Time-to-Market: 510K submission expedites timeline to commercialization, to enable revenue generation up to four years faster than de novo alternatives\*



### Global Intellectual Property Moat

- Patents granted in **40+ countries** (including U.S., EU, Japan, Australia) covering the core thermosensitive collagen scaffold and formulation. Proprietary, temperature-responsive ECM scaffold developed over 10+ years at the University of British Columbia
- Scientific validation: Backed by **11 peer-reviewed publications** in top-tier journals and **\$13.5M+ in total equity** / non-dilutive financing



### World-Class Leadership & Strategic Optionality

- **Billion Dollar Track Record:** Management with deep expertise in scaling global healthcare brands
- Combined team has driven portfolio of **\$2.0B+ in revenue** and executed **multiple billion-dollar exits**

1. Pakyari M., Jalili R., Kilani R.T., et al., "Studying the in vivo application of a liquid dermal scaffold in promoting wound healing." *Experimental Dermatology* (2021) 31; 715–724.

2. Ref. Page 5 - TAM

3. Data on File. Conexeu. 2026. Preclinical findings; not peer-reviewed. Clinical significance not yet established.

One regulatory backbone. Staged to Scale.

One Formula.  
One Device.

**CXU**

Delivering a more complete  
ECM environment than  
collagen alone.

**1**  
Platform

**5+**  
Markets

**\$20B+**  
Combined Global TAM\*\*

# Contact

## Miles Harrison

President & CEO

\_\_\_\_\_  
Miles@conexeu.com

+1 (424) 333-5622 | ext. 8

## Jeff Sharpe

Chairman

\_\_\_\_\_  
Jeff@conexeu.com

+1 (424) 333-5622 | ext. 2

## Directory

Conexeu Sciences Inc.

\_\_\_\_\_  
50 West Liberty Street  
Suite 880  
Reno, NV 89501

+1 (424) 333-5622 | ext. 1

Legal Counsel

\_\_\_\_\_  
McMillan LLP  
1055 West Georgia St., #1500  
Vancouver, V6E 4N7 BC  
Canada

+1 (604) 689-9111

Auditors

\_\_\_\_\_  
Adeptus Advisory Group, LLC  
733 State Route 35  
Ocean, NJ 07712

+1 (732) 595-3115

**CONFIDENTIAL**  
NOT FOR DISTRIBUTION

Not an offer to sell nor a solicitation  
of an offer to buy any securities.

**CXU**